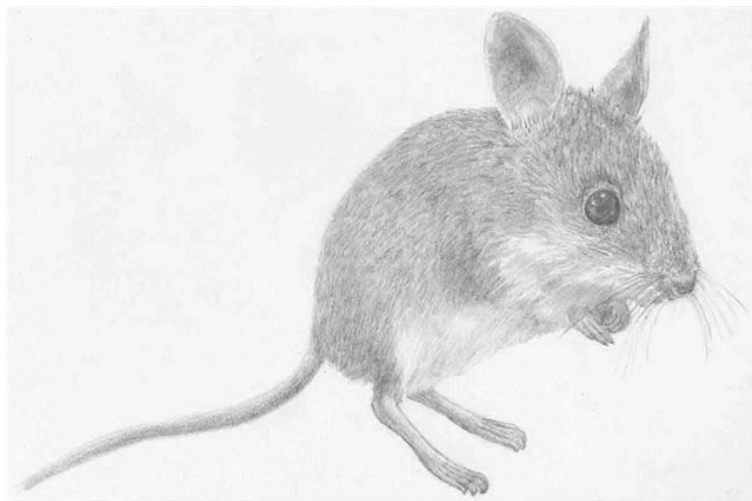


BULLETIN
of the
ECOLOGICAL SOCIETY OF AUSTRALIA
INCORPORATED

41:2 June 2011



**ECOLOGICAL SOCIETY OF AUSTRALIA
INCORPORATED**

2011 Office Bearers

President

Kris French
Institute for Conservation Biology
School of Biological Sciences
University of Wollongong
Wollongong NSW 2522
Ph: 02 42213655
02 4221 4135
President@ecolsoc.org.au

Hon Secretary

Raghu Sathyamurthy
CSIRO Ecosystem Sciences
Ecosciences Precinct
Block C, Level 3
GPO Box 2583
BRISBANE QLD 4001
Ph: 07 38335762
secretary@ecolsoc.org.au

Hon. Treasurer

Nigel Andrew
University of New England, Centre for
Behavioural and Physiological Ecology,
Zoology Department
Armidale NSW 2351
Ph :02 6773 2937; Fax: 02 6773 3814
Treasurer@ecolsoc.org.au

Executive Officer

Gail Spina
PO Box 2187 Windsor
QLD 4030
Ph: 07 3162 0901
Fax: 07 31620901
ExecutiveOfficer@ecolsoc.org.au

Past President

Carla Catterall
Environmental Sciences
Griffith University
Nathan Qld 4111
Ph: 07 37357499 / 0411205208
Fax: 07 3735 7459
pastpres@ecolsoc.org.au

Vice-Presidents

Membership & Communication

Liz Tasker,
Dept Env't & Climate Change
PO Box 1967,
Hurstville NSW 2220
Ph: 02 9585 6061
Fax: 02 9585 6606
VP1@ecolsoc.org.au

Student Affairs

Ian Williamson
Queensland University of Technology
School of Natural Resource Sciences
Ph: 07 3138 2779
Fax: 07 3138 1535
VP2@ecolsoc.org.au

Research

Glenda Wardle
University of Sydney
School of Biological Sciences
Heydon-Laurence Building, A08
Sydney NSW 2006
Ph: 02 9351 7113 / 0425382205
Fax: 02 9351 4119
VP3@ecolsoc.org.au

Hon. Bulletin Editor

Sue Murray-Jones
Coastal Management Branch
Dept for Environment and Natural
Resources
GPO Box 1047
ADELAIDE SA 5001
Ph: 08 8124 4895
Fax: 08 8124 4920
Bulletin@ecolsoc.org.au

**Membership Manager & Finance
Officer**

Lyn McCormick
finance@ecolsoc.org.au
Assistant Membership Manager
Bev Watkins
PO Box 8250
Alice Springs NT 0871
Ph: 08 8953 7544
Fax: 08 8953 7566
membership@ecolsoc.org.au

Hon. Public Officer

Debbie Saunders
Centre for Resource and Environmental
Studies
WK Hancock Building West 43
Biology Place
Australian National University (ANU)
Canberra ACT 2601
Ph: 02 6125 2635
PublicOfficer@ecolsoc.org.au

FASTS Representative

Professor Hugh Possingham
School of Mathematics and Physics
University of Queensland
St Lucia, QLD 4072
Ph: 07 3346 9693
FASTS@ecolsoc.org.au

*General mail to the ESA should be
directed to:
Ecological Society of Australia Inc.
P O Box 8250
Alice Springs NT 0871*

(Listing continued inside back cover)

Published by the Ecological Society of Australia Inc., PO Box 8250 Alice Springs NT 0871
ISSN 1320-548X

The Bulletin is printed by Asprint, Alice Springs.
©Ecological Society of Australia, Inc. 2011

NOTICE: Items printed herein should not be reproduced without the permission of the Society or the author of the material. Opinions expressed by contributors to the *Bulletin* do not necessarily represent the views of the Ecological Society of Australia, Inc. unless otherwise stated. Any mention of companies or products in the *Bulletin* should not be viewed as an endorsement by the Ecological Society of Australia, Inc.

Cover Picture: Dusky Hopping Mouse *Notomys fuscus*. Drawn by Ian McKenzie.

ESA publications are printed on recycled paper.

EDITORIAL

Sue Murray-Jones, Hon. Bulletin Editor

It's been an interesting but scary year so far. Tornados in North America, the floods here, Osama bin Laden 'taken out', the uprisings in Arab nations of north Africa and the Middle East—the list goes on. The earthquakes and tsunami in Japan have strongly demonstrated just how vulnerable coastal cities can be. The explosions at the nuclear reactors in Japan, coming with the 25th anniversary of the Chernobyl disaster, have kick-started a much-needed debate around the need for and risks of nuclear energy. I must admit, I don't have a clear position on this myself. Yes, we do need low carbon energy sources, but it's not

clear that wind, sun and wave can give us enough (and even if they could, there will be consequences. As a recent New Scientist article pointed out, you can't ignore the laws of thermodynamics). Nuclear is a relatively low-carbon option, but first we need to solve the waste disposal problem.

Hopefully this issue will hit the mailboxes early this year, as I am rushing to get it done before wandering off to look at the old Silk Road in northern China, then spend some time in a riverside ger camp in Mongolia. No work, just pure pleasure (and yes, I do feel great guilt about flying).

Copy Deadlines

Material for publication in the **September 2011 issue** of the *Bulletin*, including regional reports, should be sent to the Editor, Dr Sue Murray-Jones (Public Lands and Coastal Management Branch, Dept for Environment and Natural Resources, GPO Box 1047 Adelaide 5001; ph. (08) 8124 4895, email: Bulletin@ecolsoc.org.au) by **Friday 19 August 2011**. Note that material for 'Ecology around Australia' should go directly to Regional Councillors, not the Editor. Contact details inside back cover.

Instructions to authors

The preferred format is a minimally formatted text or RTF file submitted as an **attachment** to an email message. Please avoid sending copy as text within email messages. Attachment file names should include the author's family name and the issue for which copy is intended. Please do not use names such as 'abstract.doc' or 'bulletin.doc'.

Please observe the following conventions when preparing your contribution.

- single font (Times New Roman 12 point) throughout
- italicise all scientific names
- give the full wording of acronyms for organisations, agreements etc. on first mention

- keep formatting to a minimum
- no extra lines between paragraphs
- use single spacing

Advertising

The *Bulletin* is an A5 size publication delivered to more than 1500 individuals and institutions. The rates for camera-ready copy printed in the *Bulletin* are:

	One issue	Four issues
1/2 page	\$100	\$300
Full page	\$150	\$400

Loose inserts and pamphlets can be included in a mail-out; heavy items incur a higher rate to meet Australia Post charges. Inserts must not project beyond the covers of the *Bulletin*; inserts requiring folding will attract an additional fee. Prices for inclusions on request.

Loose advertising material will need to be delivered by Friday 19 August 2011. Details to be arranged with Executive Officer. Contact details inside front cover.

General guidelines for *Bulletin* deadlines: Second Friday of February, third Friday of May, August, and November.

SOCIETY NEWS

PRESIDENT'S REPORT

Kris French

'The evidence is mounting that Australian science is once more lost in the Dark Ages of political neglect and disfavour' (Julian Cribb, 12 April 2011,

<http://www.onlineopinion.com.au/view.asp?article=11889>). I am always astounded at how well some journalists come to the point so eloquently, if somewhat provocatively. In the article that follows, Cribb lists a range of developments that support this observation including the sudden departure of the Chief Scientist, the loss of science in the decisions concerning the Murray-Darling Basin, the under-funding of institutions like CSIRO, museums and herbaria, and the failure of the government to use scientific knowledge to make political decisions. He goes on to criticise the sector in having no strong voice to speak and be heard. We seem to have a 'perpetual inability to speak out clearly...about the importance of science to the future of Australia'. Cribb considers that it is because we are beholden to the governments for our funding and it is up to the more independent institutions to speak. Is this a role for the ESA?

I have always been a firm believer that the Society should foster good ecological science and I still consider that this is our primary role. But if government researchers and universities feel their tongues are tied to their funding, perhaps one of our secondary roles needs to be to speak a little louder on some of these issues. In fact we have it as one of the aims of the society, an aim developed in the Strategic Plan.

We vary widely in the sorts of approaches we have to ecology: some take an evolutionary approach; some a physiological focus; while others are firmly associated with conservation-based questions. What binds us as a group is a desire to do, or use, strong evidence-based research to understand and

manage the environment. It is this that we can talk about with one voice! So one of the other new initiatives is to develop a better communication tool to get across the importance of our science, where we can respond to current social and political concerns quickly with a summary of the current knowledge to date. As part of our Strategic Plan we hope to develop a 'hot topics' to replace the position statements and disseminate them to the community quicker than the original position statements. And perhaps our Research Chapters will be an important source for the development of these.

Yes, I mentioned the Strategic Plan twice now. It is uppermost in my mind after absorbing a month or so of energy. It has set Council activities for the next five years and it is now finalised. It's a great read (<http://www.ecolsec.org.au/governance.htm>)! Council is now looking to set the budget for these activities and I must say despite lots of great ideas, our capacity to develop many of the initiatives will be hampered by our income. Our budget will be summarized in the Business Plan. Of critical importance will be investing in our webpage which must provide council, members and the community with an innovative, informative and interactive site. That is going to cost us, but will be critical for both member services and outreach. Other core initiatives include the development of a financial management plan to ensure our financial resources will be available into the future to support our activities, the continued development of research chapters and new initiatives to engage young ecologists. We plan to hire another staff member for a couple of days per week to facilitate web and public liaison activities—expertise of this sort is often missing in ecological researchers. I am

hopeful that our capacity to be a better voice for science and the need for science in our society will improve as the strategic plan rolls out.

And where is FASTS in this science communication debate? The federation has been extremely quiet for a number of years despite the backing of many scientific organisations. The frustration at adding thousands of dollars to the FASTS pot each year but receiving no perceivable outcomes

has resulted in the ESA council suspending its membership while we consider our alternatives. This year, Carla Catterall and Nigel Andrew will review our membership of FASTS and determine if this is the right place to put our resources to 'speak out clearly and strongly'. Your opinion and discussion in this review would be much appreciated.

Kris French
May 2, 2011

EXECUTIVE OFFICER'S REPORT

As of May this year I will have been with the Ecological Society as Executive Officer for three years. Firstly, I can't believe the time has gone so quickly, and secondly, when I look back over that period, I feel that so much has been achieved both in implementing new programs and initiatives for our members, and in delivering an increased level of governance within the Society. This is not an easy task for a not-for-profit organisation with limited resources and a volunteer Council, but the Society is very lucky to have such a dedicated and talented group of people committed to taking the organisation into its next 50 years! At its April meeting, Council agreed to renew my contract for a further three years and I am very grateful for this because it provides the opportunity to see a whole range of new programs such as the web redevelopment, research chapter networks, indigenous participation and many other initiatives identified in the new Strategic Plan through to completion. I am very privileged to work with such a great team of people.

Back to business, I would like to draw everyone's attention to a number of ESA grant opportunities that are currently open for application. The Nature Conservancy Applied Conservation Award, now in its 4th year, offers a \$6000 award to support the field-based research of a postgraduate student working in applied ecology, and also offers registration, accommodation, and travel to ESA11 to receive the award and ESA12 to

present, so it's worth having a go. Applications close July 29 (see p.11).

The NT Student Travel Award is again being offered this year (p.11). This award is a NT regional initiative, specifically aimed at student members seeking to support and encourage ecologists working in the NT, and to promote their engagement with other NT members of ESA and the wider ESA community. The award of up to \$1000 will assist the successful applicant with the cost of attending ESA11 in Hobart in November 2011. Applications close July 29.

The inaugural Remote Indigenous Participation Award offered in 2010 has now been extended to all regions of the Country and is offering eligible applicants limited funds to support the sharing of knowledge and Indigenous participation in the Indigenous ecology symposium, 'Indigenous Australia: culture and conservation' at the annual ESA conference in Hobart. The funding will cover or partially cover travel, accommodation and conference registration. Applications close July 29 (p.10).

Add to these the annual student travel grants and Wiley Blackwell Fellowships offered to assist students get to the annual conference and there's no excuse not to be in Hobart in November! See you there!

Information on all these awards and other Society activities can be found on the Society's website www.ecolsoc.org.au.
Gail Spina, April 2011

SECRETARY'S REPORT

Raghu Sathyamurthy

Ecological Society of Australia Council Meetings

Meeting—Sunday 13 February 2011 (Meeting #1). Venue: Riverglenn Conference Centre, Brisbane. (Held in conjunction with 2011 Strategic Planning Day). Meeting started at 11:25 AEDT.

1.0 WELCOME AND APOLOGIES

1.1 Chairperson's Welcome and Introduction

1.2 Attendees & Apologies

Present: Kris French (President), Carla Catterall (Past-President), Nigel Andrew (Treasurer), Glenda Wardle (VP-Research), Ian Williamson (VP-Student Affairs), Gary Luck (EMR – Chair, Editorial Board), Don Driscoll (ACT Councillor), Ben Gooden (NSW Councillor), Andrew Hayes (QLD Councillor), Nerissa Haby (SA Councillor), Kerry Bridle (TAS Councillor), Peter Vesk (VIC Councillor), Eddie van Etten (WA Councillor), Lyn McCormick (Finance Officer), Gail Spina (Executive Officer), Raghu Sathyamurthy (Secretary)

Apologies: Liz Tasker (VP-Public Liaison), Michael Bull (Austral Ecology Chair, Editorial Board), Sue Murray Jones (Bulletin Editor), Christine Schlesinger (NT Councillor)

1.3 Minutes of Previous Council Meeting (December 2010) – For ratification*

MOTION: That the minutes of the previous Council meeting be accepted as a true and correct record, pending minor edits. Moved: Nigel Andrew. Seconded: Carla Catterall. All in favour. Motion carried.

1.4 Minutes of Previous Executive Meeting (November 2010) – For noting*

Council noted minutes of previous Executive meeting.

2.0 ACTION ITEMS FROM PREVIOUS MEETINGS

2.1 Matters Arising from Previous Council & Executive Meetings*

Agenda Item #Action arising Person By
PD_Dec09_2.4.2 STUDENT. Develop options and costings for broadening student awards program. Completed. Part of Strategic Plan and Part of WG Activity for 2011. Student Affairs Working Group/Ian. Planning Day 2010.

PD_Dec09_2.6.1 INDIG. Identify members of a potential Indigenous Support Working Group. Completed. Ian. Planning Day 2010.

PD_Dec09_3.3.1 PUBLIC L. Develop draft guidelines for use of ESA logo. Update: Revised due date. Public Liaison Working Group/ Paula. Planning Day 2010. April Council.

ExecJul10_4.1.1 Discuss with fund managers the possibility of restructure of investments to reduce risks without realizing losses. Also investigate the exposure of ESA's investments to fluctuations in European markets. Bring outcome of these discussions and alternative options for future action to next Executive meeting. Update: Nigel has been corresponding via email with the fund managers. Fund manager has indicated that the exposure of ESA investments is more in the Asian region than Europe. A detailed response on current investments has also been forwarded to Lyn and Nigel. Completed. Nigel. Sep Exec. Strat. Planning Day.

ExecJul10_4.3.2 Table position descriptions of Executive, Finance and Membership Officers for discussion by Council. Completed. May need to be revised in light of discussions at Strategic Planning Day. Gail, Lyn. Planning Day 2010.

CounAug10_4.10.1 Discuss nature and frequency of regional events. Completed. Council. Strat. Planning Day.

ExecSep10_4.1.2 Review funding support for EMR Editor's attendance of ESA's annual conference. Exec Sep 2013.

ExecSep10_4.4.1 Discuss communications and e-communications strategy including ESA Bulletin at Strategic Planning Day. Completed. Council. Strat. Planning Retreat.

ExecSep10_4.6.2 Assess best ways to benchmark payment of ESA's Paid Officers to ensure continued equity and transparency. Part of new Action Item on updating position descriptions and related financial commitments of ESA Council and Paid Officers. Completed. Carla, Kris, Nigel, Lyn, Gail. Strat. Planning Day.

ExecSep10_5.2.1 Discuss potentials and processes relating to ESA's partnership in funded projects, including potential conflict of interest issues. Completed. Part of Feb Council Agenda. Council. Strat. Planning Retreat.

CounOct10_3.1.1 Explore options for using photos from Photographic Competition in a calendar for sale to the members. Update: This has been discussed via email, and it was decided that it was not feasible for 2010. This will be reconsidered in early 2011. Revised due date. Lyn/Paula/Liz/Gail. Nov Exec. March Exec.

CounOct10_3.2.1 Revised AERA Policy and Procedures to be circulated to council via email. Update: Document completed, but needs to be ratified by Council. Glenda/Raghu. Dec Council. April Council.

CounOct10_3.2.2 Revised Research Chapters document to be considered by Council. Update: Document completed, but needs to be ratified by Council. Glenda/Raghu. April Council.

CounOct10_4.8.1 Periodic review of Time Offsets for ESA President and associated honorarium. Council. October 2013.

Coun_Dec10_4.2.1 EMR Review: Incorporate Council's feedback into the ESA's response to W-B's suggestions, and convey this information to W-B. Update: Revised due date. Jann/Gary. Feb Council.

Coun_Dec10_4.3.1 Discuss the possibility of continuation of any tasks from the list of activities compiled as part of 50th anniversary tasks. Completed. Part of Feb Council Agenda.

3.0 REPORTS

3.1 Treasurer's/Finance Report—Nigel Andrew/Lyn McCormick*

Nigel and Lyn tabled the Balance Sheet, Income Statement and Cashflow Statement. Council noted that there were no major changes to the financial position of the ESA since the previous review by Council in December, and that the ESA's finances were in good order. As part of discussions during the Strategic Planning Day, Council identified the need for a financial governance plan as part of the Business Plan.

Coun_Feb11_3.1.1 Develop draft Financial Governance Plan and Business Plan for ESA. Nigel/Financial Governance WG. March Exec.

3.2 Vice President (Student Affairs) Report—Ian Williamson

Ian informed Council of the awards made to student for travel to ESA10 (Canberra), for presentations at ESA10 (Canberra), and as part of the October Round of the ESA student research grants.

Student prize winners at ESA10:

ESA Marilyn Fox Award for best inaugural presentation at a conference: Deborah Segal (ANU): The effect of altitude on reproductive and vegetative characteristics in Australian alpine flora

ESA Wiley-Blackwell Student prizes for outstanding spoken presentation (three awards): Jody O'Connor (Flinders University): In-nest video monitoring of parasite impacts. Rachael Gallagher (Macquarie University): Functional diversity and climate change. Kadri Koorem (University of Tartu / Estonia): Seedling regeneration depends on seed availability and ecological filters.

ESA Wiley-Blackwell Student prizes for outstanding poster presentation (two awards): Catherine Price (University of New South Wales): A landscape of risk - temporal and spatial distribution of predators in semi-arid Australia. Megan Phillips (University of Technology Sydney): Harder, better, faster, stronger: Phylogenetically independent contrasts of seed traits between invasive and non-invasive exotic plant species.

Wiley-Blackwell/EMR prize for a spoken presentation on management or restoration: Stephen Griffiths (Melbourne University): Remote monitoring of artificial nesting box use by microbats.

Wiley-Blackwell/EMR prize for a poster presentation on management or restoration: Haijing Shi (Australian Defence Force Academy/UNSW): Thermal properties of Australian alpine boulder fields: Hibernation refugia for the Mountain Pygmy-Possum (*Burramys parvus*).

Australian Flora Foundation prize for best spoken presentation on the biology or cultivation of native plants: Sam Wood (University of Tasmania) Age and growth of a Tasmanian temperate old-growth forest stand dominated by *Eucalyptus regnans*, the world's tallest angiosperm.

Australian Flora Foundation prize for best poster on the biology or cultivation of native plants: James Camac (Melbourne U): The interactive effects of climate change and fire on floristic composition in the Victorian Alps.

Society for Conservation Biology Prize for a spoken paper on conservation: Patricia Sutcliffe (University of Queensland): Biological Surrogates in Benthic Tropical Marine Systems—A Community Analysis Based Approach.

Ian thanked all the judges who volunteered their time and effort in judging presentations.

ESA Student Travel Grants: A total of \$9,450 in travel grants was awarded to 28 students to subsidise their attendance at ESA10. This includes \$2500 sponsorship from Wiley-Blackwell.

ESA Student Research Awards: Seven of the 23 applicants were awarded funds in the October 2010 round of ESA Student Research Awards. Recipients were:

- Libby Liggins (UQ) – Genetic composition and spatial genetic patterns of a benthic marine fish.
- Veronica Briceno (ANU) – Ecophysiology of alpine dioecious species: Examining sexual dimorphisms under harsh conditions.
- Skye Cameron (UQ) – Introduced species: phenotypic plasticity or rapid evolution?

- Samantha Childs (UWA) – Resilience of developing benthic communities on hard substrata to pulse climate change events.
- Ben Gooden (UoW) – Are the effects of alien, invasive grasses on native plant assemblages mediated by herbivores?
- Nola Hancock (Macquarie) – Should we continue to use local provenance in restoration projects?
- Fabiana Moreira (Sydney U) – Impact of biocides on marine ecosystems

Ian thanked Jennifer Firm and Andrew Hayes for the reviewing the grant proposals.

4.0 GENERAL BUSINESS

4.1 ESA Conferences

4.1.1 Criteria for Speakers at Conferences—Kris French*

As ESA conferences and membership get larger there is the likelihood that members may not get the opportunity to present their work at each conference. This is particularly problematic for students who will only be able to present their work for a couple of years. At present we have no capacity to follow individuals to ensure that members have equal opportunities to present work. In order to ensure a more equitable arrangement in the selection of spoken papers, Council identified the need for criteria/operational guidelines for conference LOCs.

Coun_Feb11_4.1.1 Develop draft criteria/operation guidelines for equitable selection of speakers at conferences to ensure that members get regular opportunities for presentation at the Annual Conference; bring to Council for ratification as part of Conference Guidelines for LOCs. Conferences WG. June Council.

4.1.2 ESA10 Review—Kris French/Gail Spina

Gail is going to be meeting with CONLOG to review ESA10. Council and ESA10 LOC members were requested to provide feedback to ensure continued improvements to the running of ESA's annual conference.

4.1.3 ESA11—Kerry Bridle

Kerry informed Council that plans for ESA11 (Hobart) are progressing well, and that the Call for Symposia is closing at the end of February. Several Council members noted there may be a need for later deadlines than those currently preferred by CONLOG.

4.1.4 ESA12—Peter Vesk

Peter informed Council that John Morgan has agreed to serve as the Chair of the LOC for ESA12 meeting that is to be held in Victoria. The ESA12 LOC plans to meet in April to initiate planning for this conference.

4.2 ESA Bulletin Deadline—Kris French/Sue Murray-Jones*

Sue had indicated to Council that her travel commitments may affect her ability to compile the June issue of the ESA Bulletin, and provided Council with multiple options to resolve this including (1) moving forward the Bulletin production deadlines, (2) delay the publication of the June Bulletin, (3) produce an August issue in place of the June and September Bulletins, and (4) seek a guest editor to complete the production of the Bulletin according to existing deadlines. Council decided that Options (1) and (3) were equally preferable, and that Sue chooses the option that best fit her time commitments and inform Council of her decision. Depending on the chosen options, Council members were requested to be alert to any modified Bulletin timelines.

4.3 TERN Representative—Kris French*

Jann Williams has fulfilled the role of ESA contact with TERN for a couple of years, but would now like to step down to pursue other interests. Her role has included representation on the Eco-informatics and AUS Plots Facilities Steering Group and facilitating the incorporation and development of the long term dataset held by ESA in collaboration with TERN and, now, ANU. Carla volunteered to take over from Jann in representing ESA in discussions with TERN.

MOTION: That Carla Catterall is elected to represent the ESA on the TERN Eco-informatics and AUS Plots Facilities Steering

Group. Moved: Eddie van Etten. Seconded: Nigel Andrew. All in favour. Motion carried.

Carla requested Council that a back-up person may be required for occasions that she is unable to attend meetings with TERN. Council decided to approach Jann to see if would consider being such a back-up person in light of her knowledge of the history of these interactions.

Coun_Feb11_4.3.1 Discuss with Jann the possibility of her serving as a back-up to Carla as ESA's representative in interactions with TERN, should Carla be unable to attend any meetings. Carla/Kris. June Council.

4.4 Fostering links with NZES—Kris French*

Based on discussions between ESA and NZES Presidents at ESA10, Kris tabled options for reciprocal arrangements to improve linkages between ESA and NZES. These included provision membership and conference registration discounts, and reciprocal invitation of award winners (e.g. AERA, Te Tohu Taiao awards) to speak at conferences. Council agreed that better links between the two societies would be valuable, but would need to be considered in light of current contractual arrangements with Wiley-Blackwell, and ESA's Strategic and Business Plans.

Coun_Feb11_4.4.1 Develop mechanisms for better links between ESA and NZES in light of contractual arrangements with Wiley-Blackwell, and ESA's Strategic and Business Plans. Kris/Gail. June Council.

4.5 Summary of ESA 50th Anniversary Activities—Gail Spina

Gail updated Council on the status of activities planned as part of ESA's 50th Anniversary celebrations. Council noted that a substantial number of tasks/events had been completed. Some of the completed tasks were going to be continued as a regular activity (e.g. calendar from the photo competition), and others were to be progressed further (e.g. Cameo Perspectives, History of the ESA). Carla has volunteered to take over the oversight of the compilation of the Cameo

Perspectives, and explore options for the production of the History of the ESA.

Coun_Feb11_4.5.1 Report on progress on Cameo Perspectives and History of the ESA. Carla. April Council.

4.6 Membership Drive Gail Spina/Lyn McCormick

A membership drive is planned in conjunction with the enhancements to the membership database being planned as part of the redesign of the ESA webpage. Meanwhile, the membership brochure is being revised to better capture the current and planned initiatives (e.g. research chapters) of the ESA.

Coun_Feb11_4.6.1 Revise Membership brochure. Gail. June Council.

4.7 2011 Council Work Plan—Gail Spina*

Gail tabled the draft 2011 work plan for Council. In light of discussions at Strategic Planning Day, this plan will be revised and recirculated to Council.

Coun_Feb11_4.7.1 Revise 2011 Council work plan and circulate to Council members. Gail. April Council.

Council/Executive meetings for 2011 will be held on the second Friday of each month (except the Council meeting held at ESA11) via teleconference. Meetings are to commence at 11:00 (NSW time) and are anticipated to conclude by 12:30.

Liz Tasker is the VP representative attending Executive meetings in 2011.

4.8 Template for Submission of Agenda Items for Council/Exec—Kris French*

Council discussed ways to improve the efficiency with which Council and Executive meetings are organized. A redesign of the template used to solicit agenda items from Council members is planned. This template will be mailed to Council/Exec members.

5.0 OTHER BUSINESS

5.1 Items referred from Strategic Planning Day

To aid implementation of the Strategic Plan (2011-2015), the position descriptions for Council members and Paid Officers of the society are being created or updated. This document will also include any potential financial implications of these positions (e.g. salary, benchmark salary scales).

Coun_Feb11_5.1.1 Update/Create position descriptions for Council members and Paid Officers of ESA. Council. April Council.

Several action items for Council and working groups were identified as part of the discussions at Strategic Planning Day. Upon compilation of the Strategic Plan (2011-2015), these items will be incorporated into the list of Action Items for consideration at respective Council and Executive meetings.

5.2 Agenda items added during the meeting

5.2.1 Research Chapter on Agricultural Ecology—Kerry Bridle

Kerry informed Council that there was considerable interest at ESA10 for setting up a research chapter on Agricultural Ecology. She is in the process of initiating email correspondence with those who have expressed interest and with the Research Chapters WG to help set-up this chapter.

5.2.2 ESA as a partner on grant proposals—Carla Catterall

In 2010, ACEAS had approached ESA about the possibility of doing a research project to understand collaborative networks among ecologists in Australia, with the possibility of lodging a grant proposal towards the same. Based on discussions at the September 2010 Executive meeting, ESA had communicated to TERN that the topic of research was of value to the ESA and had provided a letter endorsing the importance of the proposed grant proposal, and offering ESA member-communication vehicles to assist the project. Carla informed Council that the grant proposal submitted by ACEAS was unsuccessful, but ACEAS was interested in exploring alternative funding options such as ARC-Linkage, with ESA possibly serving as an 'industry partner'. Council discussed the need for development of guidelines for

consideration of such proposals in light of the Strategic Plan and Business Plan.

Coun_Feb11_5.2.1 Develop draft guidelines for ESA partnering in grant proposals in light of Strategic Plan and Business Plan. Kris. Exec.

5.2.3 Austral Ecology—Mike Bull

Mike informed Council (via Raghu) that he is meeting with Wiley-Blackwell representatives in March, and will report to Council on these meetings at the April Council meeting.

5.2.4 Membership Process—Lyn McCormick

Lyn sought clarification on the most efficient way of handling review of new membership applications by Council in light of constitutional amendments (made at the 2010 AGM) eliminating the need for a proposer and a seconder. Council suggested that the best way of handling these applications would be to send new applicant information (including CV) to one member from Executive and one from Council (preferably the Regional Councillor from the state/territory of the applicant) for endorsement. If the number of applicants was large (as may occur during peak periods of membership renewal), Council suggested that it may be more efficient to review these as part of the monthly Council/Executive meetings.

5.2.5 Review of Membership Status of Council—Kris French

Kris advised Council of the need for a process of regular review of membership status of

Council members to ensure that decisions made by Council were constitutionally valid.

Coun_Feb11_5.2.2 Check membership status of current Council members. Lyn. March Exec.

Lyn has agreed to review this annually at the time of nomination/renomination for membership on Council.

5.2.6 Global Network of Early Career Researchers—Andrew Hayes

Andrew informed Council that he had been approached by a group that is part of the Ecological Society of America (ES America) about the possibility of ESA assisting the development of a global network of Early Career Researchers. While Council supported such engagement, there was a need for a process of facilitating such interactions particularly if access to ESA's membership database and other resources were required.

Coun_Feb11_5.2.3 Discuss process of ESA involvement in Global ECR Network being initiated by Ecological Society of America and report to Council. Andrew, ECWG. April Council.

6.0 NEXT MEETING

6.1 Next Executive Meeting—11 March 2011

6.2 Next Council Meeting—8 April 2011

Meeting ended at 13:30 AEDT

* Papers related to this agenda item were circulated prior to the meeting, and are available on request from the Executive Officer and Secretary.

OTHER ESA NEWS

New members

A very warm welcome to the following new members: Hazel Parry; Anna Gsell; Megan Ford; Hannah Matthews; Darren Masterman-Smith; Andrea Sabella; Liza Smith; Rosie Cooney; Rohan Collins-Roe; Amy-Marie Gilpin; Amy Bond; Melanie Commerford; Rebecca Richardson; Amanda Woolcock; Michael Driessen; Sonya Stallbaum; Anna Bruniche-Olsen; Jorge Ramos; Peter Stronach; Jessie McMaster; Rebecca Phyland; Gabriela Hilty; Nancy Shackelford; and Rafeena Boyle.

Indigenous Travel Grant

Ecological Society of Australia Conference, 21-25 November 2011, Hobart, Tasmania

The Ecological Society of Australia is offering eligible applicants limited funds to support the sharing of knowledge and Indigenous participation in the Indigenous ecology symposium, 'Indigenous Australia: culture and conservation' at the annual ESA conference in Hobart, Tasmania, 21-25 November 2011. The funding will cover or partially cover travel, accommodation and conference registration.

We are looking for Indigenous Australians who would like to share their ecological knowledge and the work they have been doing to protect country and culture. Non-Indigenous Australians will also be there to share their knowledge and research findings. Let's come together to share our experiences and talk together to build relationships and respect between Indigenous and non-Indigenous cultures for a better future.

For more information about the conference see the website: <http://esa2011.org.au>.

To be eligible for this funding you must:

1. be an Indigenous Australian living in Australia

2. present a paper in the 'Indigenous Australia: culture and conservation' symposium (note: co-authoring is encouraged)

3. submit the grant application form and presentation abstract by July 29, 2011.

The Grant Award application form can be downloaded from the ESA website www.ecolsoc.org.au/prizes.html, or by emailing Gail Spina.

Note: There are limited funds to support successful applicants and level of funding will depend on the number and quality of applicants.

For further information contact: Gail Spina, executiveofficer@ecolsoc.org.au, phone (07) 3162 0901.



Talking about country in the Warddeken IPA



Daryl Lacey from Dhimurru presenting at 2010 ESA conference

2010 Student Grants and Awards



The Nature Conservancy and the Ecological Society of Australia are now calling for applications for The 2011 Nature Conservancy Applied Conservation Award. Closing Date – Friday July 29, 2011.

A grant of \$6,000 will be awarded to support the field-based research of a postgraduate student working in applied ecology. The scope of research is open to terrestrial, marine and freshwater ecology. The scholarship is open to any student who is enrolled in postgraduate research at an Australian University and is a member of the Ecological Society of Australia.

A condition of the award is that the winner must be able to attend ESA11 in Hobart (November 21-25, 2011), to accept the grant, and the following year at ESA12 to present their work as 'The Nature Conservancy Applied Conservation Award presentation'. To assist with attendance at these conferences, registration will be complimentary and the Trust will provide a

travel and accommodation support grant of up to \$4,000.

A subcommittee of the Jill Landsberg Trust will decide on the award of the grant. A decision will be announced in early September 2011 and the decision of the sub-committee is final. Applications must be submitted in one PDF document to the Executive Officer of the Society ExecutiveOfficer@ecolsoc.org.au.

For more information on how to apply, past winners, or to become a member of the ESA visit www.ecolsoc.org.au/prizes.htm.

NT Student Travel Award to attend ESA11

The ESA is pleased to announce the NT Student Travel Award will again be offered in 2011. The award is an NT regional initiative, specifically aimed at student members. The aim of the award is to support and encourage ecologists working in the NT, and promote their engagement with other NT members of ESA and the wider ESA community. The award will assist the successful applicant with the cost of attending ESA11 in Hobart in November. The award of up to \$1000 is open to ESA student members and may be used for travel costs, accommodation, conference registration, or a combination of these. For further details about the application process and eligibility contact our NT regional councillor, Christine Schlesinger, email: nt@ecolsoc.org.au or visit the ESA's website www.ecolsoc.org.au.

Ecological software for research and teaching since 1982

Individual Licenses:

Over 2,000 institutions in 60 countries.

Classroom Licenses:

Thousands of students at over 400 universities worldwide.

Government Licenses:

Over 50 U.S. Federal and State users. agency-wide

www.ramas.com

©RAMAS is a registered trade mark of Applied Biomathematics

MISCELLANEOUS

Ozone hole linked to climate change

Ozone depletion, an upper atmospheric phenomenon confined to the polar regions, has been linked to climate change from the pole to the equator in the Southern Hemisphere. The ozone hole is now widely believed to have been the dominant agent of atmospheric circulation changes in the last half century. This means that international agreements about mitigating climate change cannot be confined to dealing with carbon alone—ozone needs to be considered, too. Even though CFCs are no longer being added to the atmosphere, and the ozone layer will recover in the coming decades, the closing of the ozone hole may have a considerable impact on climate.

<http://www.sciencedaily.com/releases/2011/04/110421141630.htm>

Sensitivity of tree growth and fecundity to climate change

An 18-year study of 27,000 individual trees indicates that tree growth and the ability to produce viable seeds are more sensitive to climate change than previously thought. Earlier spring warming is one of several factors that affect tree reproduction and growth, and summer drought is an important but overlooked risk factor for tree survival. The trees studied included 40 species, located in eleven different forest stands in three geographic regions of southeast USA. They were subjected to both natural and experimental variations.

<http://www.sciencedaily.com/releases/2011/04/110404111050.htm>

Mangroves among the most carbon-rich forests

Per hectare, mangrove forests in Indo-Pacific regions store up to four times more carbon than most other tropical forests. This is in part due to the deep organic-rich soils in which they grow. Mangrove-sediment carbon stores were on average five times larger than those typically observed in terrestrial forests (per unit area). Recently, mangroves have

experienced rapid deforestation worldwide—a 30-50% percent decline in the past 50 years. Mangrove deforestation generates greenhouse gas emissions of 0.02-0.12 petagrams of carbon per year, which is equivalent to up to 10% of carbon emissions from global deforestation.

<http://www.sciencedaily.com/releases/2011/04/110404173247.htm>

(See also 'Carbon storage in mangrove and peatland ecosystems: A preliminary account from plots in Indonesia.'

http://www.nrs.fs.fed.us/pubs/jrnl/2009/nrs_2009_murdiyarso_001.pdf)

Ocean fertilisation

The UNESCO Scientific Summary for Policymakers on Ocean Fertilization has recently been released. The report considers the practicalities, opportunities and threats associated with large-scale ocean fertilization. Fertilization might be carried out over a range of scales, by directly adding nutrients, or increasing nutrient supply from deep water, or by other means. However, such fertilization of the oceans to boost the growth of phytoplankton is unlikely to work as a way to slow climate change. Experiments in recent years do not support the idea that iron dust or other nutrients will spur the growth of microscopic marine plants and permanently suck carbon dioxide from the atmosphere. Such 'geo-engineering' schemes would be hard to monitor and are likely to store only small amounts of carbon dioxide.

<http://unesdoc.unesco.org/>

Biodiversity leads to higher productivity

Ecosystems containing several species are more productive than individual species on their own. Using data from more than 400 published experiments, a research team has found evidence that increased biodiversity in the plant kingdom leads to increased efficiency in assimilating nutrients and solar energy, resulting in greater production of biomass. The study examined the question of whether ecosystems can maintain important

functions such as production of biomass and conversion of nutrients when biodiversity is depleted. Species-rich plant communities appear to be more effective and productive, perhaps because they have a higher probability of including 'super-species' (species that are highly productive and effective in regulating ecological processes), or because different species have characteristics that complement one another. <http://www.sciencedaily.com/releases/2011/03/110321183015.htm>

The Living Planet Report 2010

The 2010 Living Planet Report examines the state of our natural world and our impacts. Using data from 241 countries, the report reveals our Ecological Footprint has more than doubled since 1966. In 2007 humanity used the equivalent of 1.5 planets to support its activities. The Ecological Footprint measures how much land and water a human population requires to produce the resources it consumes and to absorb its wastes, using prevailing technology. The figures released in the report illustrate the challenges for preserving biodiversity, for halting climate change and meeting human aspirations. The report presents scenarios based on actions that could change the future. An atlas of maps highlights information on biocapacity, consumption and production per country. http://www.footprintnetwork.org/en/index.php/GFN/page/2010_living_planet_report/

United Nations International Year of Forests 2011

The United Nations General Assembly declared 2011 as the International Year of Forests (Forests 2011) to raise awareness on sustainable management, conservation and development of all types of forests.

According to the United Nations:

- forests cover 31% of the Earth's total land area
- 30% of these produce both wood and/or non-wood products
- forests are home to 80% of our terrestrial biodiversity
- the livelihoods of over 1.6 billion people depend on forests, and

- forests are home to 300 million people around the world.

More information on Forests 2011 at:

<http://www.un.org/en/events/iyof2011/index.shtml>

Plants have fewer pores

As carbon dioxide levels have risen during the last 150 years, the density of pores that allow plants to breathe has dwindled by 34%, restricting the amount of water vapour the plants release to the atmosphere. Doubling carbon dioxide levels is likely to dramatically reduce the amount of water released by plants. Data were collected from a diversity of plant species in Florida, including living individuals as well as samples extracted from herbarium collections and peat formations 100 to 150 years old. The increase in carbon dioxide by about 100 parts per million has had a profound effect on the number of stomata and, to a lesser extent, the size of the stomata. While it is well known that long-lived plants can adjust their number of stomata each season depending on growing conditions, little is known about the long-term structural changes in stomata number or size over periods of decades or centuries.

<http://www.sciencedaily.com/releases/2011/03/110303111624.htm>

Arctic blooms occurring earlier

Warming temperatures and melting ice in the Arctic may be behind a progressively earlier bloom of a crucial annual marine event, and the shift could hold consequences for the entire food chain and carbon cycling in the region. Phytoplankton peaks are now arising up to 50 days early, with unknown impacts on marine food chain and carbon cycling. Scientists plotted the yearly spring bloom of phytoplankton in the Arctic Ocean and found the peak timing of the event has been progressing earlier each year for more than a decade. The researchers analysed satellite data depicting ocean colour and phytoplankton production to determine that the spring bloom has come up to 50 days earlier in some areas in that time span. The earlier Arctic blooms have roughly occurred in areas where ice concentrations have

dwindled and created gaps that make early blooms possible.

It's not clear if the consumers of phytoplankton are able to match the earlier blooms and avoid disruptions of their critical life-cycle stages such as egg hatching and larvae development. The spring bloom provides a major source of food for zooplankton, fish and bottom-dwelling animals. The advancement of the bloom time is likely to have consequences for the Arctic ecosystem.

<http://www.sciencedaily.com/releases/2011/03/110302171320.htm>

Vines overrunning the tropics

Tropical forests hold more than half of Earth's terrestrial species and much of the planet's carbon. If vines take over tropical forests the rules used to model ecosystem services, such as regulation of the water cycle and carbon storage may no longer apply. In 2002, Oliver Phillips, a professor at the University of Leeds in the U.K., published a controversial study claiming that vines were becoming more common in the Amazon. By pulling together data from eight different studies, researchers now have evidence that vines are on the rise not only in the Amazon, but throughout the American tropics. This is a fundamental structural change in the physical make-up of forests that will have a profound impact on the animals, human communities and businesses that depend on them for their livelihoods. For example, on Barro Colorado Island in Panama, the proportion of vines in tree crowns has more than doubled over the past 40 years. In French Guiana, liana vines increased 60% faster than trees from 1992 to 2002. Similar reports from Brazil, the Bolivian Amazon and subtropical forests in South Carolina in the United States confirm that vines are becoming more common and represent more of the total forest biomass.

There is no consensus as to why lianas are gaining the upper hand. They may survive seasonal droughts that are becoming more common as climate becomes more variable. They may recover more quickly from natural disturbances such as hurricanes and El Niño events and from human disturbances like logging, clearing land for agriculture and road

building. Lianas also respond quickly to an increase in atmospheric carbon dioxide.

<http://www.sciencedaily.com/releases/2011/02/110214083002.htm>

GPS to 'map' bat teeth

Using a method based on geographic positioning systems to characterize the topography of bats' molars, researchers calculated a measure of dental complexity that reflects how 'rugged' the surfaces of the teeth were. Working with field-collected bat skulls, researchers compared the structure of molars across 17 species of the New World leaf-nosed bats that specialize in a variety of different diets. This study directly measured trends in the relationships among diet, tooth structure, feeding performance and feeding behaviour. The molars of fruit-eating species had sharp outer edges that likely allow them to pierce tough fruit skin and pulp, plus large surfaces with tiny indentations that may help them grind fruit pulp efficiently. By contrast, the molars of insect-eating species were less complex, possibly because of their smoother shearing surfaces. The more simply-shaped teeth would presumably be good for cutting through hard insect exoskeleton.

<http://www.sciencedaily.com/releases/2011/02/110218111713.htm>

ECOLOGY AROUND AUSTRALIA

TASMANIA

Kerry Bridle, Regional Councillor

Hi All

I've just been away at the International Rangelands Congress in Rosario, Argentina, and have had plenty of opportunities to look at beef production from native vegetation, particularly the native pastures of Uruguay. Land conversion is progressing at an alarming rate there, mainly due to the development of soy-bean production and eucalypt plantations, all on grazing land that was dominated by native species. There seems to be very little policy directed at grassland conservation in Argentina or Uruguay—all food for thought.

While I was away, members of the Local Organising Committee, ably led by Pep Turner (and ConLog) continued to progress plans for ESA2011. Symposia are finalised and the call for abstracts is now open.

Forestry Tasmania (with University of Tasmania)

Simon Grove, local contact

Our landscape biodiversity projects, carried out in conjunction with researchers at the University of Tasmania, are coming together now. Thanks to a magnificent team effort, we have recently completed collection of the final set of beetle samples from all 56 plots in the southern forests—and dragged out all 224 pitfall and 224 TWIT traps accordingly. Yijin (Simon) Ong continues to process these samples back in the lab—a job that could take quite a while yet, thanks to Lynne Forster's ultra-efficient TWIT trap design! Lynne and Christina Schmuki continue to make progress with the molecular work exploring population structure and dispersal in selected saproxylic beetle species from the same plots (as part of their UTas doctoral and postdoctoral research respectively). Meanwhile, Jayne Balmer has

made good progress with collecting and analysing the floristics and structural data from these same plots (as part of her UTas doctoral research), and Andrew Hingston (FT's contract ornithologist) has begun analysing the bird data, following his recent completion of his 16th round of point-counts (that's 16 x 4 x 56 counts all up!). A big team effort has also seen us compile about 300 plot-level variables and GIS-derived landscape metrics. It's early days in exploring their relevance to biodiversity, but preliminary analyses suggest that our mature forest is holding up well, regardless of landscape context, while the silvicultural regeneration is not holding up as well in the most heavily disturbed/intensively utilised landscapes. Ironically, this sort of intensively utilised landscape in the rural 'treechanger belt' is just what the current 'forest peace process' looks set to deliver more of—don't say I didn't warn you!

Nick Jones (doctoral student, UTas) is working with Sue Baker (UTas Research Fellow) to finalise an experimental design for exploring the role of mature-forest influence on structuring beetle assemblages in silvicultural regeneration, utilising study sites in the southern forests. In May, Sue and Mark Neyland (FT's silvicultural researcher) head to Sweden to participate in an international workshop on variable retention harvesting, convened by Professor Lena Gustafsson of the Swedish University of Agricultural Sciences. The workshop aims to make a global overview of current practices and knowledge, and to communicate this with the scientific community as well as with forestry and conservation practitioners, through a jointly written scientific overview paper. Meanwhile, Simon Grove (FT's conservation biologist) and Martin Moroni (FT's carbon researcher) head to Canada to present at an international symposium on dead wood, at the University of Quebec in Rouyn-Noranda. Simon will take the opportunity to wrap up a

decade of Tasmanian research on dead wood and its biodiversity and dynamics, while Martin will address carbon sequestration and forest management issues.

Finally, a plug for a book that I've just written and published, which should prove ideal for southern ecologists with tendencies towards marine biology. It's called 'The seashells of Tasmania: a comprehensive guide', and has illustrations and text for 350 species that can be found locally. By the time this bulletin is published, it should be available for purchase through the Tasmanian Field Naturalists' Club web-site (<http://www.tasfieldnats.org.au/Publications.html>).

Forest Practices Authority

Amy Koch, local contact

Researchers associated with the Tasmanian Forest Practices Authority are as busy as ever. Work on tree hollows has resulted in a map predicting potential hollow availability in Tasmania which will soon be available online to help forest managers plan harvest operations. The FPA eagle project officer, Jason Wiersma, has completed his fourth year of nest surveys and is assessing the timing of wedge-tailed eagle breeding activities and the re-use of nest sites over time. Sarah Munks went on a study tour with Richard Loyn (ARI) and Rod Kavanagh (NSW DPI) to North America in 2010 to see how different agencies monitor the effectiveness of forest practices in conserving biodiversity. Karen Richards received her doctorate for her research on the habitat needs and the genetic differences of several species of endemic freshwater snail in two catchments in northern Tasmania. Students supported by the FPA have also been busy. Erin Flynn received her doctorate for her study on the effects of forestry activity on brushtail possums. Shannon Troy is developing predictive habitat models for the Tasmanian spotted-tailed quoll. Mick Todd has used call playback data for the Tasmanian masked owl to create models that describe the likelihood of locating masked owls in a particular habitat. Lisa Cawthen has been out investigating how the availability of forest habitat in the landscape,

and the amount, characteristics and spatial arrangement of retained forest at the finer scale affects microbats in Tasmania.

NSW

Ben Gooden, Regional Councillor

Hi all,

NSW in turmoil

It's been a busy and somewhat tumultuous start to the year for us all in New South Wales: storms in the parliament, floods and ravaged river systems, a new cohort of students and the commencement of the teaching year.

On Sunday, 27th March, NSW awoke to a new parliament and a Senate in turmoil. Within a few days of the formation of the new parliament it became clear that environmental issues would be potentially placed at threat from a variety of political forces. Some groups are calling for permission to hunt feral animals (and other animals?) in National Parks and an immediate review of marine parks; others are requesting access to National Park estates for livestock grazing (because, it is claimed, this activity will reduce fuel loads and reduce the severity of fires). As it stands, the NSW Coalition government has announced that it plans to dissolve the existing environment department, incorporating responsibility for National Parks and the EPA into the Department of Premier and Cabinet, and marine parks and CMAs into Department of Primary Industries (<http://www.smh.com.au/environment/conservation/ofarrell-slices-up-land-care-control-20110403-1ctx.html>)! And on top of all this is the uncertainty surrounding the Federal government's Carbon Tax and the potential for reduced research funding in the next federal budget!

Changes are already underway. For example, the NSW Coalition recently lifted a ban on recreational fishing in breeding grounds of the endangered grey nurse shark on the mid-north coast, despite the overwhelming scientific evidence that sanctuary zones benefit native marine biodiversity.

<http://www.smh.com.au/environment/animals/anger-as-fishing-ban-is-revoked-20110429-1e0sg.html#ixzz1LMmfAsAv>

So where do we go from here as ecologists in the face of environmental degradation and the potential concomitant loss of research funds? This, I'm sure, will consume us in the year to come.

Changes to NSW regional contacts

At the start of the year I endeavoured to consolidate the network of regional contacts for NSW with limited success. Some extant contacts changed positions, moved states or chose to retire from their positions. On behalf of all ESA members, I wish to thank each and every one of the regional contacts for NSW, past and present. A formal thanks to retiring contacts will be published once their requests have been finalised. I have been in touch with some members who have hinted at their interest to take up the role of regional contact and negotiations are still underway. Once a list of current contacts is confirmed, I will report this to members via ESA e-news at the earliest opportunity. I will also send out a list of vacancies and a call for members who are interested in taking up these positions.

Many thanks and happy ecology!

Plus a couple of NSW events...

Natural History of the first National Park, sponsored by the National Parks & Wildlife Service of NSW. The Linnean Society of NSW will convene a symposium on the Royal National Park and its surrounding landscapes that will bring together contributions from biologists and earth scientists, geographers, amateur naturalists, historians and sociologists who will present their studies of natural history and human geography in this important area.

Royal National Park, established on the southern outskirts of Sydney in 1879, is the world's first dedicated national park. On the oceanic rim of the Sydney geological basin, it is home to a uniquely diverse flora and fauna and has a long tradition of research and education in the natural sciences. The reserve also chronicles a rich history of human activity from pre-historic aboriginal

societies to contemporary multi-cultural communities.

The Symposium is scheduled for two days of sessions on 29-30 September 2011 at the Audley Dance Hall, with a day-long field trip on Saturday 1 October.

Scientific papers from the Symposium will be published in a special issue of the Proceedings of the Linnean Society of NSW, subject to peer review. In addition, speakers will be invited to contribute to a special extension publication for a broader non-scientific audience.

Expressions of interest are sought for presentations on:

- Ecology of native flora and fauna, conservation biology and ecosystem dynamics
- Ecological and human history (pre-historic & contemporary)
- Bushfire science
- Biology of invasive species
- Systematics and biogeography of local and regional biota
- Geodiversity, geomorphology and landscape evolution
- Human use, visitor impacts and management of the Park
- Royal as an education resource and the role of education in Park use and management
- Linking science and practice in Park management

Register expressions of interest for a spoken or poster presentation or attendance at the Symposium by emailing linnsoc@iinet.net.au.

Mollusc Course

A comprehensive course on molluscs will again be held at the University of Wollongong, Wollongong, NSW, Australia, from 5 to 16 December 2011. The course covers the biology, diversity, conservation, classification, relationships and importance to humans of the second-largest animal phylum. It includes field work and practicals, and can accommodate up to 21 students. For undergraduate Australian university students it is an eight credit point course.

Overseas and interstate participants are welcome and student accommodation is available.

The course is organised by Assoc. Prof. Andy Davis and run with staff from the Australian Museum (Winston Ponder, Don Colgan, Mandy Reid). For more information: <http://www.uow.edu.au/science/biol/UOW009845.html>.

QUEENSLAND

Andrew Hayes, Regional Councillor

All the news from Queensland this time is from the north, thank you very much to those local contacts who always send me something for inclusion in the Bulletin. If there is anyone else, especially in the south of our state, that is doing anything, we aren't hearing about it here! It really is not a lot of work, just sending me something four times a year (or even once a year if that is all you can manage). If you think you are up for the challenge please drop me an email at: QLD@ecolsoc.org.au.

Until next time...

Australian Wildlife Conservancy, north-east Australia

John Kanowski, local contact

Since our last post, AWC ecologists in North-east Australia have conducted fauna surveys on Mount Zero—Taravale Wildlife Sanctuary, near Townsville, and Brooklyn Wildlife Sanctuary, near Cairns, a wet season frog survey on Piccaninny Plains Wildlife Sanctuary on Cape York Peninsula, and currently we're conducting plant and animal surveys at Bowra, near Cunnamulla in south-west Queensland. Some details of this work follow.

Mount Zero—Taravale (MZT for short) is a diverse property, straddling the Wet Tropics and Einasleigh Uplands bioregion. Its ecosystems include rainforest; tall wet sclerophyll forest dominated by flooded gum, red stringybark and turpentine; sclerophyll forests of ironbark and lemon-scented gum,

and forest red gum on the river flats; and extensive savanna woodlands. In places, stands of hoop pine amongst granite boulders dominate the skyline. We surveyed 42 forest and woodland sites in October 2010 for small mammals, reptiles and frogs. Microbats were surveyed at nine sites; and intensive cage and camera trap surveys were conducted in wet sclerophyll forests in an attempt to detect the endangered northern bettong. The survey obtained records of 48 vertebrate species not previously recorded on the sanctuary, bringing the total number of vertebrates confirmed for MZT to 349 (57 mammals, 208 birds, 68 reptiles, 16 frogs). Unfortunately, the Northern Bettong was not recorded during the 2010 survey: a recent PhD by Brooke Bateman (JCU, part funded by AWC) presented evidence that the northern bettong may have declined in response to extreme dry weather in 2003. We hope the bettong is persisting somewhere in the region, as MZT had supported one of three known populations. If not, reintroduction of the species may be an option.

At Brooklyn, AWC and the CSIRO team of Alex Kutt, Genevieve Perkins, Justin Perry and Eric Vanderduys completed the sixth survey of the property since acquisition by AWC (two surveys in each of 2006, 07 and 10). These surveys are mainly intended to track the recovery of biota following the removal of cattle and establishment of a conservation-oriented fire regime on the sanctuary. Data are currently being analysed; preliminary results indicate significant changes in a range of taxa and guilds. Other news from Brooklyn includes the recent completion of a detailed vegetation map by Peter Stanton, and ongoing work establishing permanent vegetation plots by AWC botanist Rigel Jensen.

On Piccaninny Plains, AWC herpetologist Eri Mulder and assistant Jo Jo Heathcote took advantage of the mail plane to get onto the property during the wet season to conduct a frog survey. Piccaninny Plains is aptly named—you could say it 'lacks relief' or is 'rich in wetlands'. In the wet season, the mighty Archer and Wenlock Rivers overflow and replenish wetlands on their floodplains, the gilgais in the extensive blacksoil plains

fill with water (each depression supporting waterlilies and freshwater crabs), and the frogs 'go off'. The survey recorded four frogs not yet confirmed for the sanctuary, bringing the total frog richness to 22 species. Another five species are waiting to be detected.

AWC recently acquired Bowra, a property renowned for its bird life in the mulgalands in south-west Queensland. We are currently collecting baseline data on other fauna (mammals, reptiles, frogs) on 20 permanent monitoring sites, stratified by habitat. Results will be discussed in a future post.

Forthcoming surveys include Pungalina—Seven Emu in June and Piccaninny Plains in August. On both of these sanctuaries, survey effort will be directed by recently completed monitoring plans.

School for Field Studies, Centre for Rainforest Studies, Yungaburra

Tim Curran, local contact

Things have been rattling along at the School for Field Studies since our last report a year ago. Sigrid Heise-Pavlov and her interns and undergraduate students have been doing work on Lumholtz tree kangaroos and cane toads. Tree roo work has mainly focused on Siggy's interest in mammalian olfaction, including behavioural responses to scents from native (pythons) and introduced (dogs) predators. Other projects have examined the longevity of tree roos' scats or the distribution of internal parasites in the gastrointestinal system, in conjunction with Karen Coombes, formerly of JCU. Cane toad projects have examined lung worm infection rates and their links to toad size, health and movement.

My work on plant functional traits continues. Recent student projects have looked at methods of sampling wood density and in particular comparing wood density measurements taken from different parts of the plant. We have also been playing around with some pilot studies on traits (wood density, wood colour, simple chemical traits) associated with wood decay rates. Finally, a group of students this semester have been collaborating with Noel Preece and Penny van Oosterzee of Biome 5 on their large-scale

restoration experiment at Thiaki Creek. This has included projects comparing techniques for estimating seedling volumes and comparing carbon sequestration across tree species and planting techniques.

SFS also welcomed a new faculty member last year. Rohan Wilson joined us after completing his doctorate at ANU on the potential impacts of climate change on a diverse group of rainforest invertebrates. Having worked in Steve William's lab at JCU, Rohan has been applying his interest and experience in ecological modeling to some student projects which have looked at various climate change scenarios in the Wet Tropics to evaluate the effectiveness of proposed wildlife corridors for different taxa. He also supervised a suite of plant projects last semester when I was on paternity leave indoctrinating my new daughter in all things plant functional.

Sadly, this is my last report to the ESA Bulletin from SFS. I depart the Wet Tropics next month after five fabulous years to take up a position at Lincoln University, Christchurch. Rohan will be shifting into my role and will take over as SFS local contact. I wish him and all my past and present SFS colleagues and students all the very best.

Vertebrate Ecophysiology Laboratory, James Cook University, Cairns

Sarah Kerr, local contact

The Vertebrate Ecophysiology Laboratory at JCU in Cairns has been very busy of late, branching out into new areas of research both in Australia and in Papua New Guinea. We have begun a large project working to monitor species protected by the YUS conservation area on the Huon Peninsula in PNG, a significant task, which is being run in conjunction with Conservation International, Woodland Park Zoo, the Tree Kangaroo Conservation Program, KFW (the German Development Bank) and James Cook University. To coordinate these efforts we are excited to welcome Mark Ziembicki as a post-doc. This project is stretching our brains as we try to wrap them around the more social science aspects of this conservation project, but his previous work with aboriginal

communities in the Northern Territory is proving an invaluable asset in this research. We are also still working in this project with Gabriel Porolak who has just graduated with his MSc on home ranges of tree kangaroos in high elevation cloud forest. Congratulations Gaby—Mipela hamamas tumas!

Closer to home we have celebrated a number of graduations, including Ben Waincymmer, who graduated with honours this year after completing his research into the thermal tolerances of four tropical skink species. Melanie Commerford and Anna Pintor achieved first class honours for their studies on multiple paternity in the northern brown bandicoot, and the metabolic cost of venom production in the northern death adder respectively. Anna has already begun her PhD research, examining the physiological plasticity of skinks along Australia's east coast, while Melanie has moved into a new job within Alex Loukas' parasitology lab here at JCU. Sarah Kerr completed her PhD late last year and is currently preparing her findings about epigenetic, diet-driven colour change in brushtail possums for publication while also lecturing at JCU. Andres Merino Viteri is coming close to finalising his PhD on thermal ecology of microhylid frogs. Gabriella Eiris from the Dickman lab at the University of Sydney has been a long-term visitor to the lab and recently submitted her PhD thesis using all that spare time you get after having a baby.

We have been excited this year to welcome Freddy Pattiselanno, Lara Upton, Jonathan Tindall and Nat Briscoe to our lab. Freddy is an academic from the University of Papua, Manokwari and has begun his PhD degree examining hunting on the Vogelkop Peninsula of West Papua in Indonesia. Lara is comparing the thermal ecology of hot and cool roosting microbat species out at the Chillagoe caves for her honours research, and Jonathan has returned from several months on Magnetic Island, collecting data for his MAppSci study about the factors that limit home range size, using koalas as a model species. Nat is a PhD student from University of Melbourne, from Mike Kearney and Kath Handasyde's labs—we are working with Nat on the thermal ecology of koalas, particularly here in the north.

Andrew Krockenberger and Johan Larson are still here, plugging away at various research projects. Andrew is mainly trying to get data out that we've collected over the last five years or so, trying to learn about physiological niche-mapping from Mike Kearney and Nat Briscoe as well as complaining about reviews of manuscripts and the latest administrative requirements. Johan is still managing the lab, keeping equipment working and generally ensuring that things run reasonably smoothly i.e. making himself indispensable!

NOTICEBOARD & ADVERTISEMENTS

Please help to keep the notice board current and informative. **Please give details rather than just a web address**, it can take ages to access even basic information from some sites.

FORTHCOMING MEETINGS

2011

June 1-4, 2011. 2011 Int. Symp. on Environmental Science and Technology. Dongguan, Guangdong Province, China.
<http://www.isest11.com>

June 8-9, 2011. NSW Sustainable Development Conf. Sydney, NSW.
<http://www.halledit.com.au/nswsd2011>

June 20-24, 2011. Int. Assoc. for Vegetation Science 2011. Villeurbanne, France.
<http://iavs2011.univ-lyon1.fr/en>

June 23-24, 2011. Bushfire Conf. 2011: Bushfire in the Landscape: Different values, a shared vision. Sydney, NSW.
<http://www.ncnsw.org.au/content/bushfire-landscape-different-values-shared-vision>

June 26-29, 2011. People in Places: Engaging Together in Integrated Resource Management. Halifax, Nova Scotia, Canada.
<http://www.coastalcura.ca/peopleinplaces2011.html>

June 26-July 1, 2011. 9th Int. Temperate Reefs Symp. Plymouth, UK.
<http://www.itrs2011.org/default.asp>

June 28-July 3, 2011. Int. Interdisciplinary Conf. on the Environment. Kona, Hawaii, USA.
<http://ieaonline.org>

June 30-July 1, 2011. Collaborative Decision-making in NRM Conf. Sydney, NSW.
<http://www.nrmoutcomes.com/>

July 3-7, 2011. Int. Symp. on Integrated Coastal Zone Management. Arendal, Norway.
http://www.imr.no/om_havforskning/instituttet/arrangementer/konferanser/ICZM_2011/en

July 3-7, 2011. Australian Marine Sciences Association (AMSA). Ann. Conf. Fremantle, WA.
<http://www.amsa2011.com.au/>

July 18-22, 2011. 15th Int. Congress of Myriapodology. Brisbane, Qld.
<http://www.15icm.org>

July 21-22, 2011. 3rd Int. Conf. on climate change: impacts and responses. Rio de Janeiro, Brazil.
<http://www.Climate-Conference.com>

July 22-24, 2011. Australian Soc. for Fish Biology. Townsville, Qld. www.asfb.org.au

July 23-30, 2011. XVIII Int. Botanical Congress. Melbourne, Vic. <http://www.ibc2011.com>

July 29-August 4, 2011. Int. Biodiversity Conf. Baños, Ecuador.
<http://www.wsfbioconference.org>

August 17-19, 2011. Int. Conf. on Environmental Pollution and Remediation. Ottawa, Ontario, Canada.
<http://ICEPR2011.International-ASET.com>

August 21-25, 2011. Soc. for Ecological Restoration: Int. World Conf. on Ecological Restoration. Mérida, Mexico.
<http://www.ser2011.org/en/>

August 22-26, 2011. 5th Int. Symp. on GIS/Spatial Analyses in Fishery and Aquatic Sciences. Wellington, New Zealand.
<http://www.esl.co.jp/Sympo/5th/>

August 23-25, 2011. 7th Int. Conf. on Marine Bioinvasions. Barcelona, Spain.
<http://www.icmb.info/>

August 30-September 2, 2011. Frontiers in Historical Ecology. Birmensdorf, Switzerland.
http://www.wsl.ch/frontiers_historical_ecology

Sept 6-8, 2011. Landscape Ecology and Ecosystem Services. Telford, Shropshire, UK.
<http://iale.org.uk/conference2011>

Sept 8-10, 2011. 12th Int. Conf. on Environmental Science and Technology. Rhodes, Dodecanese, Greece. <http://www.gnest.org/cest>

Sept 8-12, 2011. 2nd World Congress on Biodiversity. Kuching, Sarawak, Malaysia. www.worldbiodiversity2011.com

Sept 11-14, 2011. 19th Int. Conf. on Environmental Indicators. Haifa, Israel. <http://isei2011.technion.ac.il/>

Sept 12-15, 2011. Land-Ocean Interactions in the Coastal Zone (LOICZ). Yantai, China. <http://www.loicz-osc2011.org/index.asp>

Sept 12-16, 2011. 3rd Symp. on Environmental Weeds & Invasive Plants (Intractable Weeds and Plant Invaders). Ticino, Switzerland. http://www.ewrs.org/coming_events.asp

Sept 25-29, 2011. 12th European Ecological Federation Congress 2011. Ávila, Spain. www.europeanecology.org

Sept 26-30, 2011. World Conf. on Marine Biodiversity. Aberdeen, Scotland. <http://www.marine-biodiversity.org>

Sept 27-28, 2011. 6th Ann. Conf. of the Soc. for Risk Analysis Australia and New Zealand. Brisbane, Qld. <http://www.acera.unimelb.edu.au/sra/news.html>

Sept. 26-30, 2011. World Conf. on Marine Biodiversity: Our Oceans, Our Future. Aberdeen, Scotland. www.marine-biodiversity.org

Sept 28-Oct 1, 2011. Australasian Ornithological Conf. Cairns, Qld. <http://www.birdsaustralia.com.au/whats-on/australasian-ornithological-conference.html>

Sept 29-Oct 1, 2011. Symp. on the Royal National Park. Linnean Soc. of NSW. Audley, NSW. Register at linnsoc@iinet.net.au

Oct 18-21, 2011. Aquaculture Europe. Rhodes, Greece. <https://www.was.org/EasOnline/Default.aspx>

Nov 8-11, 2010. Drylands, Deserts and Desertification: The Route to Restoration. Sede Boqer, Israel. <http://www.entersymposium.com/dd/site/>

Nov 15-16, 2011. Coastal Management 2011. Belfast, UK. <http://www.ice-coastalmanagement.com/>

Nov 21-24, 2011. Environmental Management & Technologies. Amman, Jordan. <http://www.enviro-arab.com/icemt11/>

Nov 21-24, 2011. BIOLIEF 2011—2nd World Conf. on Biological Invasions and Ecosystem Functioning. Mar del Plata, Argentina. <http://www.grieta.org.ar/biolief/>

Nov 21–25, 2011. Ecological Society of Australia. ESA11. Hobart, Tasmania. <http://www.ecolsoc.org.au/>

Dec 4-10, 2011. 10th Invertebrate Biodiversity & Conservation Conf. Melbourne, Vic. <http://www.ibcc2008.org/>

Dec 5-9, 2011. 25th Int. Congress for Conservation Biology. Auckland, New Zealand. <http://www.conbio.org/2011/>

Dec 5-9, 2011. 19th Int. Conf. of Biometeorology. Auckland, New Zealand. <http://www.icb2011.com/icb2011/>

Dec 5-16, 2011. Advances in Molluscan Biology (intensive residential course). Wollongong, NSW. <http://www.uow.edu.au/science/biol/UOW009845.html>

Dec 13-15, 2011. 3rd Int. Conf. on Management of Natural Resources, Sustainable Development and Ecological Hazards. Shah Alam, Malaysia. <http://www.wessex.ac.uk/11-conferences/ravageoftheplanet-2011.html>

2012

May 7-11, 2012. 6th World Fisheries Congress. Edinburgh, Scotland. www.6thwfc2012.com

July 2-6, 2012. MMM3: Meeting on mangrove ecology, functioning and management. Galle, Sri Lanka. <http://www.vub.ac.be/APNA/greendvke/MMM3/>

July 9-13, 2012. 12th Int. Coral Reef Symp. Cairns, Qld. www.icrs2012.com

2013

August 18-23, 2013. INTECOL 11 Congress (Ecology—Into the Next 100 Years). London, UK.



MEMBERSHIP APPLICATION FORM

The Ecological Society of Australia is a professional organisation established to promote ecological research and communication. The Society's constitutional objectives are:

- to promote the scientific study of all organisms in relation to their environment
- to promote the application of ecological principles in the development, use and conservation of Australia's natural resources
- to advise governmental and other agencies in matters where the application of ecological principles may be of assistance
- to foster the preservation of natural areas for scientific and recreational purposes and seek to ensure that such areas are soundly managed

The Ecological Society provides the following membership benefits:

- Austral Ecology, a journal of international standing—8 issues per year
- the quarterly ESA Bulletin, a newsletter for members
- weekly e-news
- an electronic mail discussion list for rapid communications, exchange of views, and advertising jobs or grant application deadlines
- online membership database @ www.ecolsec.org.au
- annual symposia and open forums, workshops and meetings
- links with international ecological bodies, including INTECOL
- reduced subscription rate to Ecological Management and Restoration journal
- opportunities to apply for grants and scholarships

Category	Australian (incl. GST)	International (excl GST plus \$10 post)
Standard	\$82.50	\$85.00
*Concession (income under \$25 000 p.a)	\$38.50	\$45.00
Family (2 members at same address)	\$110.00	\$120.00
Sustaining Associates (organisations only)	\$231.00	\$220.00
<i>Bulletin</i> subscriber only (no membership)	\$27.50	\$35.00
<i>Ecological Management & Restoration</i> journal (ESA Member subscription rate)	\$66.00	\$64.00

*Please contact ESA if you feel that you are entitled to a reduced membership for reasons other than income

Membership is for the calendar year, and includes *Austral Ecology* (8 issues/yr), the *Bulletin* (4 issues/yr) and reduced Conference registrations. Membership applications must be accompanied by a one page CV forwarded to the Membership Manager. Payments can be made for 1, 2, or 3 years in advance.

ESA MEMBERSHIP APPLICATION FORM

(Prof/A/Prof/Dr/Mr/Mrs/Miss/Ms): _____
 first name(s) last name
 Postal address: _____

State: _____ Postcode: _____ Country: _____

Telephone: (W) (_____) (H) (_____) _____

Fax: (_____) _____

email: _____

Institutional affiliation: _____
 (indicate affiliation here. It will be used in the Annual Directory. *Not* for posting unless part of the postal address above)

Formal qualification: _____ Current occupation: _____

Applicant Signature: _____ **Date:** _____

√	Category (please tick)	Australian (incl. GST)	International (excl. GST & including \$10 postage)
	1. Standard	\$82.50	\$85.00
	2. Family	\$110.00	\$110.00
<i>Concessional rates apply to retirees and members whose income is less than \$25,000 per annum.</i>			
	3.1 Concession (low income)	\$38.50	\$45.00
	3.2 Concession (retired)		
	3.3 Concession (student)		
<i>EMR subscription is additional to ESA Membership. Please add this amount for your membership.</i>			
	Ecological Management & Restoration	\$66.00	\$64.00

To apply for Sustaining Association or Bulletin subscription only, contact the ESA office.

Paying for: 1 2 or 3 years \$ _____

(You will receive back issues of *Austral Ecology* if payment is for the current year)

Total enclosed: \$ _____

I wish to pay by: Cheque Visa Mastercard

Cheques/money orders should be crossed and made out to 'Ecological Society of Australia'.

Card Holder's Name: _____

Card No:

Expiry Date: ____/____/____ Amount: \$ _____ Card Holder's Signature: _____

Send completed form with payment to:

ESA Membership Manager, PO Box 8250, Alice Springs, NT, 0871, Australia
Ph: 08 8953 7544, Fax: 08 8953 7566, email: membership@ecolsoc.org.au

ECOLOGICAL SOCIETY OF AUSTRALIA INCORPORATED

2011 Office Bearers

Regional Councillors

Australian Capital Territory

Don Driscoll
Fenner School of Environment and Society
WK Hancock Building 43
Australian National University ACT 0200
ACT@ecolsoc.org.au

New South Wales

Ben Gooden
Institute for Conservation Biology &
Environmental Management
School of Biological Sciences, University of
Wollongong, NSW, 2522
NSW@ecolsoc.org.au

Northern Territory

Christine Schlesinger
School of Environment & Life Sciences,
Charles Darwin University
PO Box 795 Alice Springs NT 0871
Ph: 08 89595218; Fax: 08 89595293
NT@ecolsoc.org.au

Queensland

Andrew R. Hayes
Dept Primary Industries and Fisheries
80 Meiers Rd Indooroopilly QLD 4068
Ph: 07 3896 9759/0431553871
Fax: 07 3896 9628
QLD@ecolsoc.org.au

South Australia

Nerissa Haby
School of Earth and Environmental Sciences
University of Adelaide, North Terrace
Adelaide SA 5005
Ph: 08 8303 5254/ 0419 033 055
Fax: 08 8303 4347
SA@ecolsoc.org.au

Tasmania

Kerry Bridle
Biodiversity Conservation Branch
University of Tasmania Private Bag 98
Hobart Tas 7001
Ph: 03 62 262837/ 0427 846050
Fax: 03 62 262642
TAS@ecolsoc.org.au

Victoria

Peter Vesik
School of Botany, The University of
Melbourne
Victoria 3010 Australia
Ph: 03 8344 7480
VIC@ecolsoc.org.au

Western Australia

Eddie Van Etten, School of Natural Sciences
Edith Cowan University
100 Joondalup Drive WA 6027
Ph: 08 9400 5566/0418 903 983
Fax: 08 9400 5509
WA@ecolsoc.org.au

Austral Ecology

Managing Editor: Mike Bull
School of Biological Sciences
Flinders University
GPO Box 2100 Adelaide SA 5001
Ph: 08 8201 2263

AustralEditor@ecolsoc.org.au

Book Review Editor: Perpetua Turner
Geography & Environ. Studies, UTas
Private Bag 78, Hobart 7001, Tasmania,
M 0417 307 895, Fax +61 3 6226 2989
books@ecolsoc.org.au

Associate Editors

Alan Andersen, *Darwin*
Nigel Andrew, *Armidale*
Andrew F. Bennett, *Geelong*
Andy T.D. Bennett, *Geelong*
Ros Blanche, *Atherton*
Bruce Burns, *Auckland, New Zealand*
David Cheal, *Melbourne*
Peter Clarke, *Armidale*
Ross Coleman, *Sydney*
Andy Davis, *Wollongong*
Don Driscoll, *Canberra*
Mike Gardner, *Adelaide*
Robert Godfree, *Canberra*
Caroline Gross, *Armidale*
Dieter Hochuli, *Sydney*
Michael Kearney, *Melbourne*
David Keith, *Sydney*
Mike Lawes, *Darwin*
Melodie McGeoch, *Steenberg, S Africa*
Angus McIntosh, *Christchurch, NZ*
Ben Moore, *Aberdeen, United Kingdom*
John Morgan, *Melbourne*
Tim Moulton, *Rio de Janeiro, Brazil*
Nicola Nelson, *Wellington, New Zealand*
Natalia Pérez Harguindeguy, *Córdoba, Argentina*
Anna Richards, *Darwin*
Alastair Robertson, *Palmerston Nth, NZ*
Belinda Robson, *Perth*
Kevin Rogers, *Johannesburg, S Africa*
Lin Schwarzkopf, *Townsville*
Anita Smyth, *Adelaide*
William Stock, *Perth*
Jennifer Taylor, *Sydney*
Jim Thomson, *Melbourne*
Tony Verboom, *Cape Town, South Africa*
Peter Vesik, *Melbourne*
Erik Wapstra, *Hobart*
Glenda Wardle, *Sydney*
Dave Watson, *Albury*
Jonathan Webb, *Sydney*
Carol J. West, *Wellington, New Zealand*
Alan York, *Melbourne*

Ecological Management & Restoration Editor

Dr Tein McDonald
PO Box 14
Woodburn NSW 2472
EMREditor@ecolsoc.org.au

Executive

Gary Luck (Chair), *CSU, Albury*
Andrew Bennett, *Deakin University*
Nigel Tucker, *Biotropica Australia*
Craig Copeland, *NSW Primary Industries*
Andrew Campbell (*ex officio*), *Land & Water Australia, ACT*

Editorial Board

Peter Bayliss, *ERISS Darwin*
Sean Bellairs, *Charles Darwin University*
Sandra Berry, *ANU*
Stuart Blanch, *WWF Australia*
Robin Buchanan, *Consultant*
Sue Carthew, *University of Adelaide*
Michelle Casanova, *Consultant*
Ian Davidson, *Greening Australia NSW*
Peter Fairweather, *Flinders University*
Alaric Fisher, *Department of Infrastructure, Planning & Environment*
Guy Fitzhardinge, *Thriving Pastoral Company*
David Goldney, *Charles Sturt University*
Richard Hobbs, *Murdoch University*
John Kanowski, *Griffith University*
Richard Kingsford, *University of NSW*
Juliana McCosker, *EPA, Qld*
Mark McDonnell, *Univ. of Melbourne*
Craig Miller, *NSW Department of Infrastructure, Planning and Natural Resources*
David Norton, *Univ. of Canterbury, NZ*
Noel Preece, *EcOz Australia, NT*
Suzanne Prober, *CSIRO Sustainable Ecosystems, Perth*
Mark Robinson, *Bioregen*
Paul Ryan, *CSIRO Sustainable Ecosystems, ACT*
Cas Vanderwoude, *Consultant, NZ*
Angela Wardell-Johnston, *Corinda*
Ben White, *University of Western Australia*
Chris Williams, *Trust for Nature (Victoria)*

Other Societies' Bulletins

Bernie Masters; PO Box 315
Capel WA 6271
Ph: 08 9727 2474
Fax: 08 9727 2670
bmasters@iinet.net.au

Contents

About this issue

Editorial and Bulletin Deadlines 1

Society News

President's Report 2

Executive Officer Report 3

Secretary's Report 4

Other ESA News 10

 New Members 10

 Indigenous Travel Grant 10

 Student Grants and Awards 2011 11

Miscellaneous 12

Ecology around Australia

 Tasmania 15

 NSW 16

 Queensland 18

NoticeBoard

 Meetings and Conference list 21

Membership information and application form

..... 23-24

Office Bearers

..... Inside Covers